



# Olathe North

---

## High School

To: Athletic Directors/Tennis Coaches  
From: Josh Price and Wendy Robinson, Olathe North High School, 6A Tournament Managers  
RE: 2018 KSHSAA 6A Girls State Tennis Tournament  
Date: October 12-13, 2018

Olathe North is honored to host the 2018 KSHSAA State tournament. The competition will be held at the College Boulevard Tennis Complex. We hope to provide an enjoyable experience and have included the following information to assist all players, coaches and fans. Please travel safely and we look forward to seeing you soon. Please contact us if you have questions:

Wendy Robinson 780-7280  
Josh Price office: 780.7146 cell: 913.579.5718

**Tournament Dates:** Friday, October 12 and Saturday, October 13, 2018. CBAC will be open of October 11<sup>th</sup> from 3:00-7:00 on Thursday, October 11<sup>th</sup> for practice. Teams may park in the southeast lot.

**Location:** College Boulevard Tennis Complex within the College Boulevard Athletic Complex  
11031 S. Valley Parkway, Olathe, KS 66061- See attached directions  
Fans need to park in the north lot

**Coaches Seeding Meeting Location:** Prairie Trail Middle School- Room 105  
21600 W. 107<sup>th</sup> Street  
Olathe, KS 66061  
Prairie Trail is directly north of CBAC- please park on the west side of the school or walk over from CBAC

**Seeding:** Coaches of all regional champions must provide 30 copies of season results.

**Time Schedule- Friday, October 12:**

9:00 A.M.	Coaches seeding meeting
10:00 A.M.	Pre-Tournament Festivities: Welcome, National Anthem, Introductions, Tournament information
10:20 A.M.	1 <sup>st</sup> round matches announced, warm-up begins
10:30 A.M.	Competition begins, matches on Friday include the first three rounds of singles and doubles

**Time Schedule - Saturday, October 13:**

8:50 A.M.	Matches announced, warm-up begins
9:00 A.M.	Competition resumes
*12:00 P.M.	Introduction of participants prior to championship matches
*2:00 P.M.	Presentation of trophies to top three teams and medals to top 12 singles and Doubles – *Times are approximate

**Entries:** Submit TNS-2 to KSHSAA by Friday, October 19<sup>th</sup>, enclose \$15.00 per athlete

**Arbitration Committee:** Per KSHSAA guidelines, one coach from each region will serve

---

600 East Prairie • Olathe, Kansas 66061

(913) 780-7140



# Olathe North

---

## High School

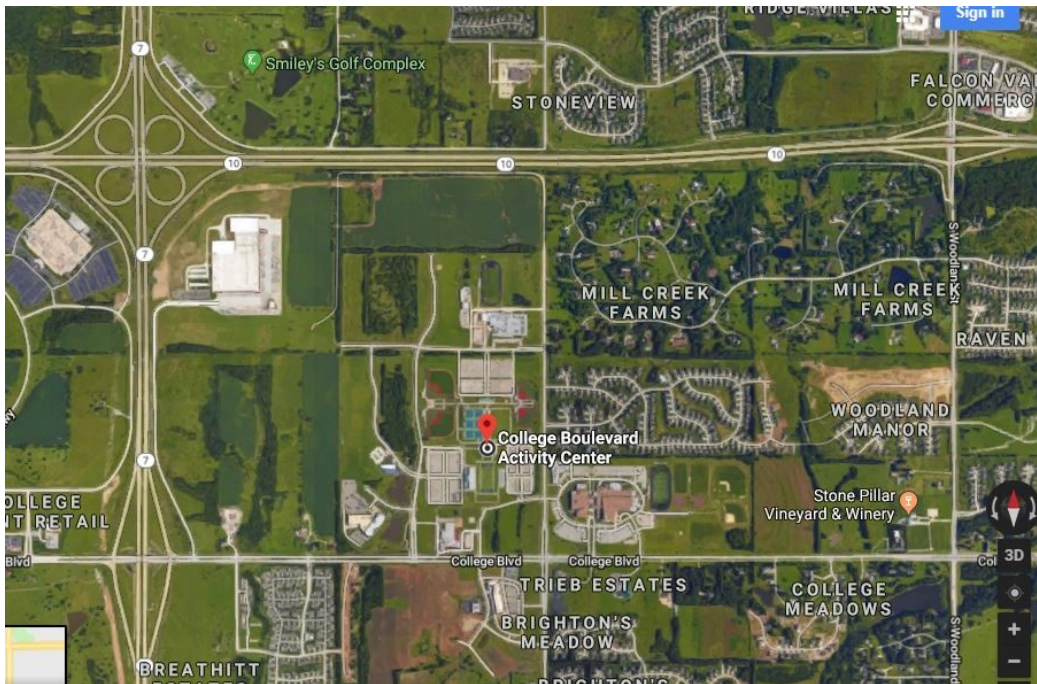
**Hospitality:** A continental breakfast will be provided to all coaches at the seeding meeting as well as \Saturday morning in the press box. Lunch will also be provided both days.

**Concessions:** The complex concession stand will be open throughout the tournament.

**Commemorative Programs and T-shirts:** Available on site beginning at 10:00 a.m. on Friday. Athletes and spectators are encouraged to purchase early as many sizes sell out.

**Racket Stringing:** We will have stringing available on-site at the expense of the purchaser.

**Lodging and Dining:** <https://olathe.org/convention-visitors-bureau>



### Directions to CBAC – 11031 S Valley Road Olathe, KS 66061

- **From I-70:** I-70 to K-7 South. Take k\_7 South to College Boulevard. Turn left on College Blvd and go East to Lone Elm Road. Turn left on Lone Elm and go North approximately 1 block. CBAC entrance is the first turn on your left.
- **From the West:** Take K-10 East towards Kansas City. Exit South on K-7 in Olathe. Take K-7 South to College Blvd. Turn left on College Blvd and go East to Lone Elm Rd. Turn left on Lone Elm and go North approximately 1 block. CBAC entrance is the first turn on your left.
- **From the South:** Take I-35 North to I-435 West. Take I-435 West to K-10 West exit. Take K-10 West to K-7 South. Exit to K-7 South. Take K-7 South to College Blvd. Turn left on College Blvd and go East to Lone Elm Rd. Turn left on Lone Elm and go North for approximately 1 block. CBAC is the first turn on your left

*600 East Prairie • Olathe, Kansas 66061*

*(913) 780-7140*